

Name: _____ Date: _____



Piano Worksheet

LESSON 19 | Bass Clef Up and Down

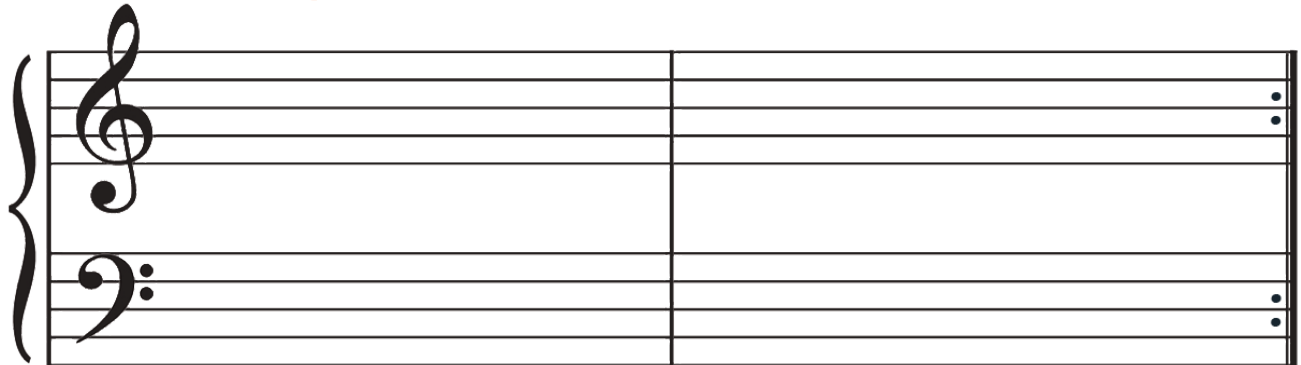
Watch the lesson before completing this worksheet.



After completing your lesson, try to draw the notes of the piano pattern you learned.

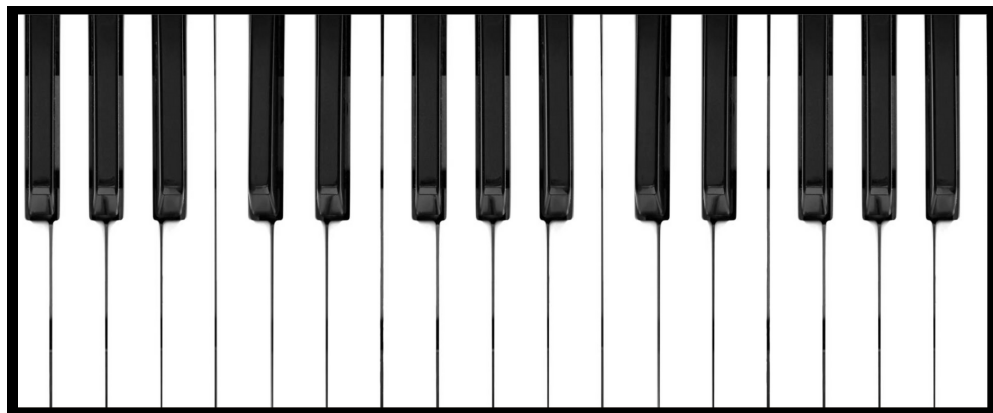
DRAW THE NOTES

Grand Staff

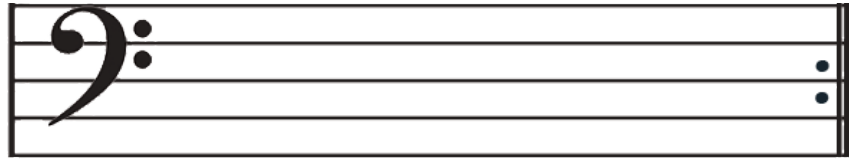


COLOR THE KEYS

Color the RED C Piano Keys that are one octave apart.

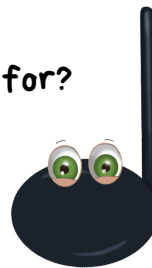


Color in the space where the C belongs on the Bass Clef Staff...



How many counts do you play this note for?

ANSWER: _____



Circle the Quarter Notes "D"

